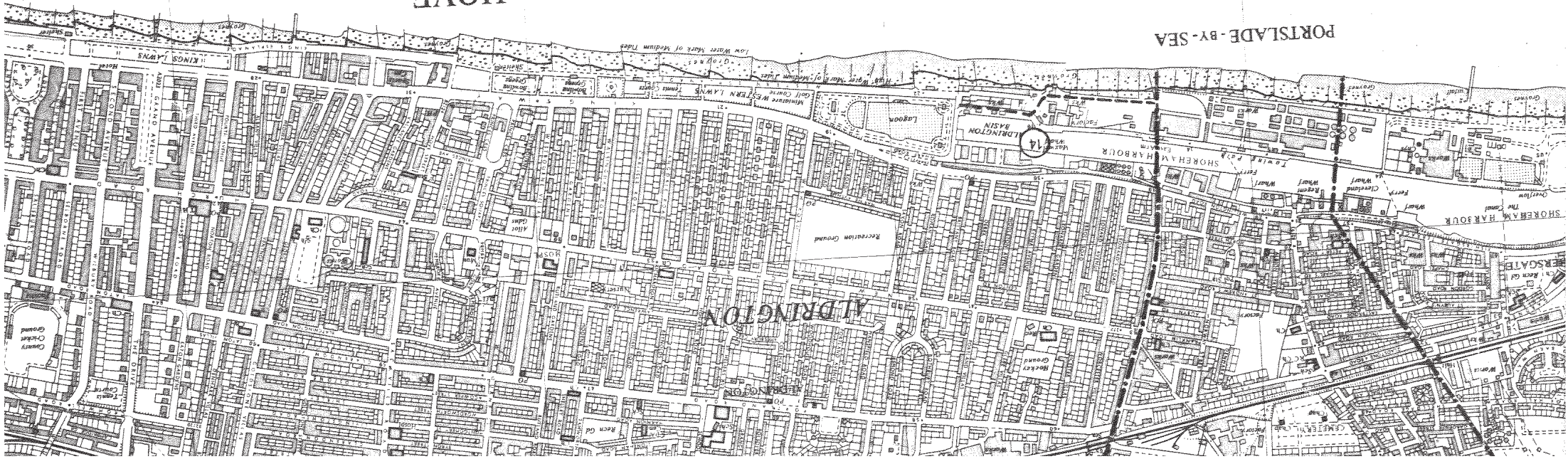


HOVE

ENGLISH CHANNEL

PORTSLADE-BY-SEA



LONG 90.0' W
 500
 1000
 Yards

Boundaries

- BP, BS Geographical County
- CP, CS Administrative County or County District
- FP, FS Administrative County or County Borough
- GP, GS Municipal (or Ward) Borough, Urban or Rural District
- MP, MS Borough or County Council
- PS, SS Where Adjoining Co. or Boro and County district boundaries coincide with those of a civil parish, the symbols for both are shown alternately

Height

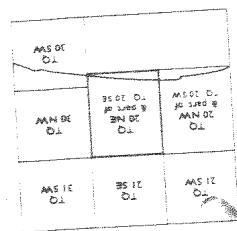
- PO, PS Height above Mean Sea Level at Newlyn
- PS, SS Contours are at 25 feet vertical intervals
- PS, SS Bench Marks and their values are shown on Large Scale plans, and Bench Mark Lists containing fuller and possibly more leveling information are obtainable from the Director General, Ordnance Survey.

Rock Features

- CS, SS Where Adjoining Co. or Boro and County district boundaries coincide with those of a civil parish, the symbols for both are shown alternately
- CS, SS Municipal (or Ward) Borough, Urban or Rural District
- FP, FS Administrative County or County Borough
- GP, GS Administrative County or County District
- MP, MS Borough or County Council
- PS, SS Where Adjoining Co. or Boro and County district boundaries coincide with those of a civil parish, the symbols for both are shown alternately

Other Features

- PS, SS Contours are at 25 feet vertical intervals
- PS, SS Bench Marks and their values are shown on Large Scale plans, and Bench Mark Lists containing fuller and possibly more leveling information are obtainable from the Director General, Ordnance Survey.



THE NATIONAL GRID
 TO GIVE A GRID REFERENCE CORRECT TO 100 METRES
 EXAMPLE
 HAMBURTON FARM

Take west edge of kilometre square in which point lies and read the large figures printed opposite this line on north or south margin. Estimate tenths north or south margin.

Take south edge of kilometre square in which point lies and read the large figures printed opposite this line on east or west margin. Estimate tenths east or west margin.

Full 100 Metre Reference TO.564057

The above Full Reference is unique. For many purposes the first grid letter can be omitted giving a reference, O.564057 which recurs at intervals of 500 Kilometres. If both grid letters are omitted, the resulting reference, 564057, recurs at intervals of 100 Kilometres. When the area concerned is sufficiently restricted, as will usually be the case with maps on scales of one inch to the mile and larger, both the grid letters are normally omitted.

As the Eastern edge of this sheet The North is 10.25 West of Grid North and at the Western edge 10.27 West of Grid North.

Magnetic North was about 40 West of Grid North in 1963 decreasing by about 1' in six years. 1 square inch on this map represents 17.778 acres on the ground.

The representation on this Map of a Road, Track, or Footpath, is no evidence of the existence of a right of way.

SURVEY DIAGRAM

1956	1956	1956	1956	1956	1956	1956	1956	1956	1956
1954	1954	1954	1954	1954	1954	1954	1954	1954	1954
1951	1951	1951	1951	1951	1951	1951	1951	1951	1951
1950	1950	1950	1950	1950	1950	1950	1950	1950	1950
1950	1950	1950	1950	1950	1950	1950	1950	1950	1950

The figures shown are the dates of surveys of the plans from which this map has been compiled. Boundaries referred to 1:11.68. Major roads revised 1962.

Legend

- Lightened Fenced
- Road
- Ministry of Transport Road Classification A123 M
- Cart Track
- Track
- Footpath
- Road
- Roofed Building
- Class Rooms
- Other Pits
- Sand Pits
- Country
- Refugee Camps
- Slag Banks
- Shaping Masses
- Shaping Masses
- Sand Pits
- Gravel Pit
- Electricity Transmission Lines (with Pylons or Posts)

